

Production OPS Agent for AWS

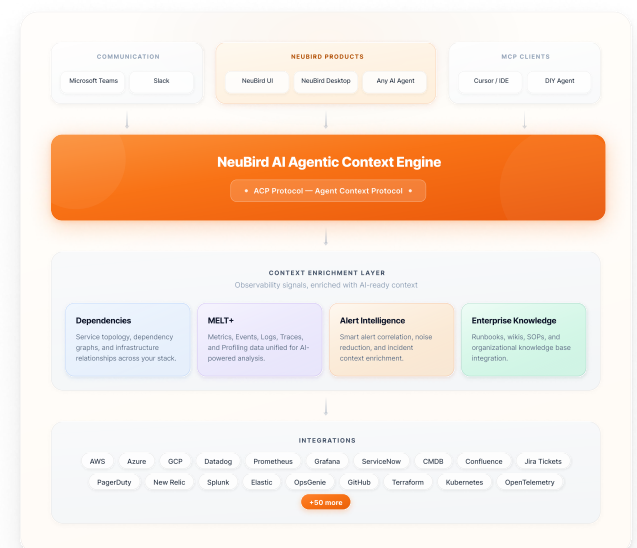
Prevent. Resolve. Optimize

NeuBird AI introduces a new model: the Production Ops Agent. Built on Amazon Bedrock, NeuBird continuously analyzes telemetry across AWS environments, transforming fragmented signals into a clear operational narrative that explains what is happening and why, in real time.

This enables a shift from reactive troubleshooting to autonomous production operations, where incidents are prevented, resolved in minutes, and continuously optimized.

Built for AWS. Powered by Bedrock.

NeuBird is built on Amazon Bedrock, leveraging advanced foundation models to deliver real-time reasoning, correlation, and root cause analysis directly within your AWS environment. This enables secure, scalable, and explainable AI-driven operations without moving data outside your control.



A New Model for AWS Operations

In AWS environments, telemetry is no longer the bottleneck. Interpretation is. Metrics, logs, traces, and events provide visibility, but not understanding. Engineers still manually correlate signals and determine root cause under pressure, creating a gap between insight and action.

NeuBird AI closes this gap with its Production Ops Agent. By applying context engineering across telemetry, dependencies, and configuration changes, it continuously identifies what is happening, why it is happening, and what to do next.

This transforms IT operations into a continuous system of intelligence, built on three core pillars:

- Prevent — Identify risks before they impact production
- Resolve — Determine root cause in minutes
- Optimize — Continuously improve performance and cost

“ Our team was able to get up and running with NeuBird rapidly. It is like having an always-on SRE that delivers real-time incident diagnosis and actionable fixes 24/7—saving hours of troubleshooting and improving service quality.”

Madhu Jahagirdar
VP of Cloud Technology and Product



PREVENT: Detect Issues Before They Occur

Shift from Reactive Response to Proactive Prevention

Most incidents do not occur suddenly. They emerge from gradual degradation, misconfigurations, or changing workload conditions. However, traditional tools are designed to alert after thresholds are crossed, not before.

NeuBird AI continuously evaluates system behavior to detect early warning signals.

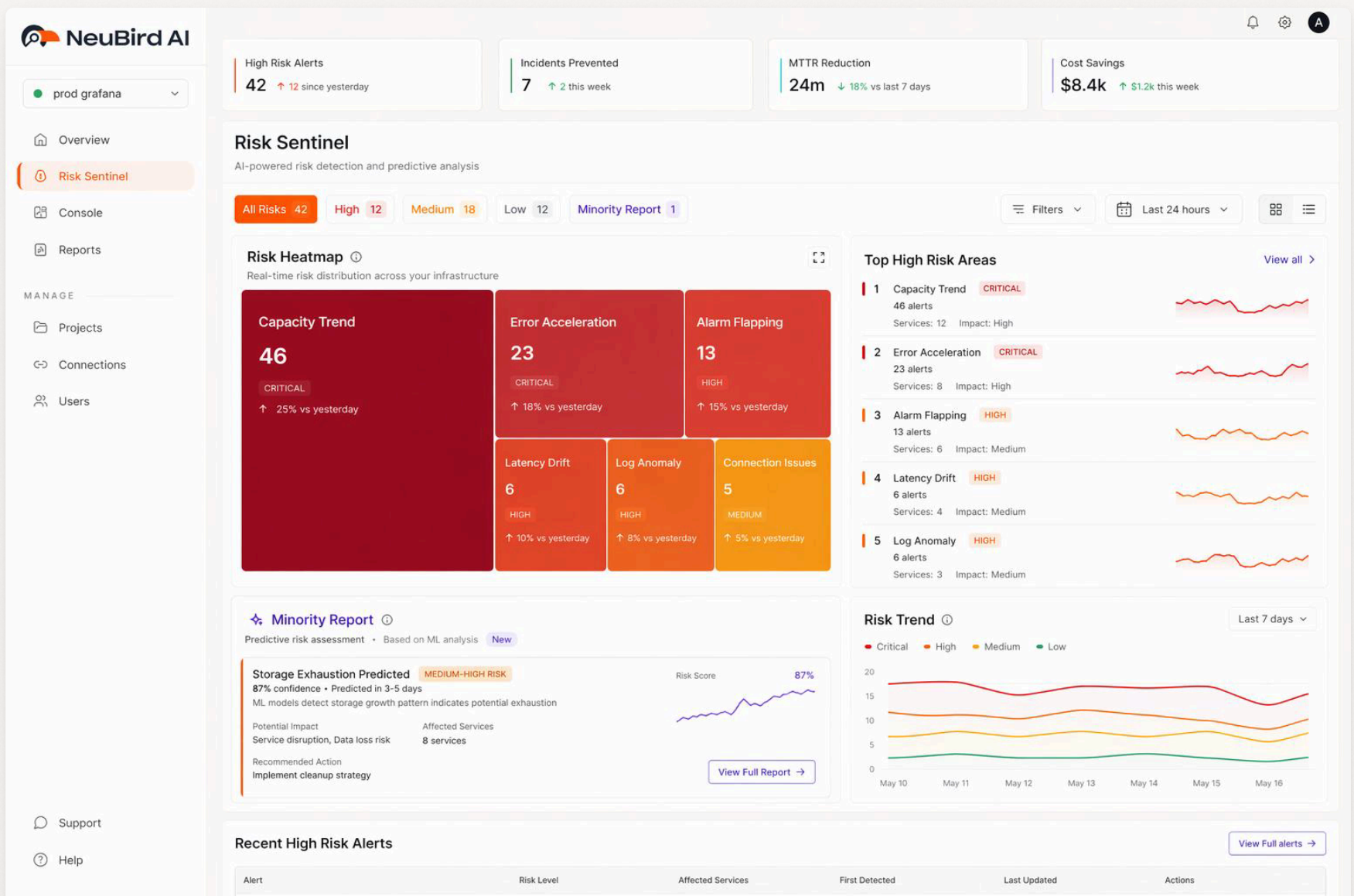
By analyzing patterns across telemetry, dependencies, and configuration changes, it identifies conditions that indicate future risk—allowing teams to act before impact occurs.

What Neubird Detects

- Configuration drift across AWS services
- Resource saturation and scaling limits
- Anomalous behavior in workloads and services
- Risk conditions across compute, storage, and networking

Impact

- Prevent incidents before they impact production
- Reduce alert noise by focusing on what matters
- Improve system stability and reliability
- Enable teams to act proactively rather than reactively



RESOLVE: From Signals to Root Cause in Minutes

Investigate and Resolve incidents in minutes

In traditional environments, identifying root cause requires navigating multiple tools, correlating logs, and forming hypotheses under pressure. Even with Amazon CloudWatch and observability platforms, teams are still left to interpret data manually.

NeuBird AI transforms this process by acting as an intelligent first responder.

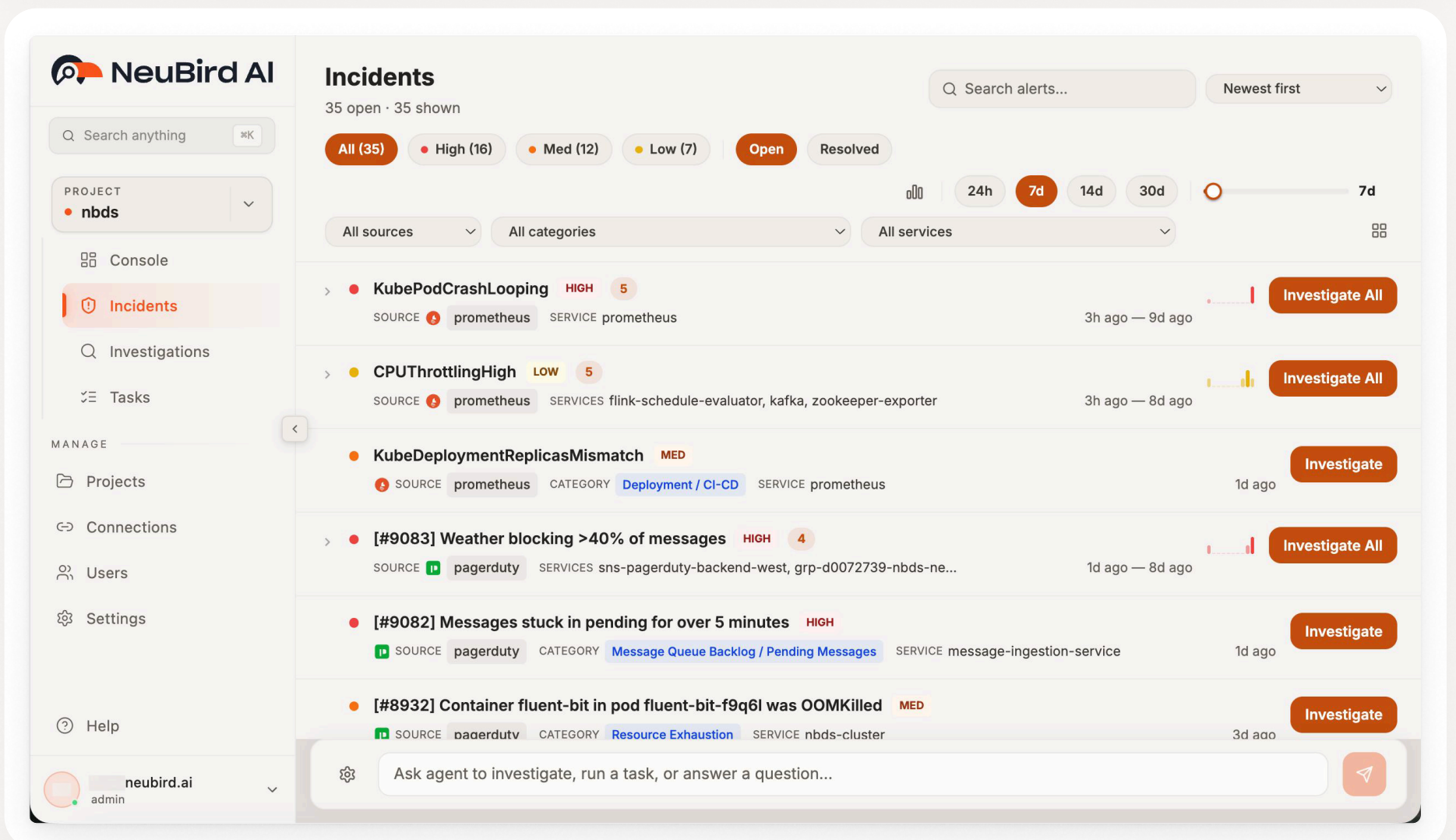
It continuously analyzes signals across AWS services including CloudWatch, EC2, RDS, S3, and EKS/ Kubernetes environments. Using context engineering, it correlates telemetry with dependencies and configuration changes to deliver evidence-based root cause analysis in minutes.

What Neubird Delivers

- Correlates logs, metrics, traces, and events across AWS services
- Identifies root cause across infrastructure, application, and data layers
- Surfaces clear, evidence-based explanations
- Provides actionable next steps for resolution

Impact

- Reduce investigation time from hours to minutes
- Eliminate manual triage and alert fatigue
- Improve incident response consistency
- Accelerate recovery and reduce downtime



OPTIMIZE: Continuous Efficiency Across AWS

Turn Operational Intelligence into Cost and Performance Gains

Cloud inefficiencies are not one-time events. They are continuous conditions driven by overprovisioning, unused resources, and evolving workloads.

NeuBird AI embeds cost and performance optimization directly into operations.

NeuBird detects cost drift across AWS environments, helping teams understand why cloud spend changed, what caused the increase, and who initiated the change.

What Neubird Optimizes

- Right-sizes compute, database, and serverless resources
- Identifies idle or underutilized infrastructure
- Detects storage growth, unused backups, and data inefficiencies
- Surfaces network and data transfer cost driver
- Detects cost drift caused by infrastructure, deployment, and scaling changes

Impact

- Reduce cloud spend without compromising performance
- Eliminate waste across infrastructure and services
- Continuously align resources with demand
- Improve accountability by identifying what changed and who changed it

The screenshot displays the NeuBird AI console interface for an investigation titled "EBS gp2 to gp3 Migration Strategy". The interface includes a navigation sidebar on the left with options like "Summary", "Skills", "INVESTIGATION DETAILS", "Support", and "Help". The main content area is divided into sections: "Impact" with a sub-section for "EBS gp2 → gp3 Migration Report", "Report" with a detailed summary, and "INVESTIGATION STREAM" on the right. The "Report" section contains the following text:

EBS gp2 → gp3 Migration Report
 Yes — all 24 EBS volumes in `us-west-2` are still on gp2 and should be migrated to gp3. No gp2 volumes were found in `us-east-1` or `us-east-2`.
 AWS Compute Optimizer returned no recommendations (no opt-in data), so the analysis below is based on direct volume inventory.

Summary

	VALUE
Region	us-west-2 only
Total gp2 volumes	24
Active (<code>in-use</code>)	7
Total storage	380 GB
Cluster	<code>nbd-cluster</code> (EKS)
Encryption	✗ None — all 24 volumes are unencrypted

At the bottom of the console, there is a search bar with the placeholder text "Ask a follow-up question or start a new investigation..." and a red button with a right-pointing arrow.